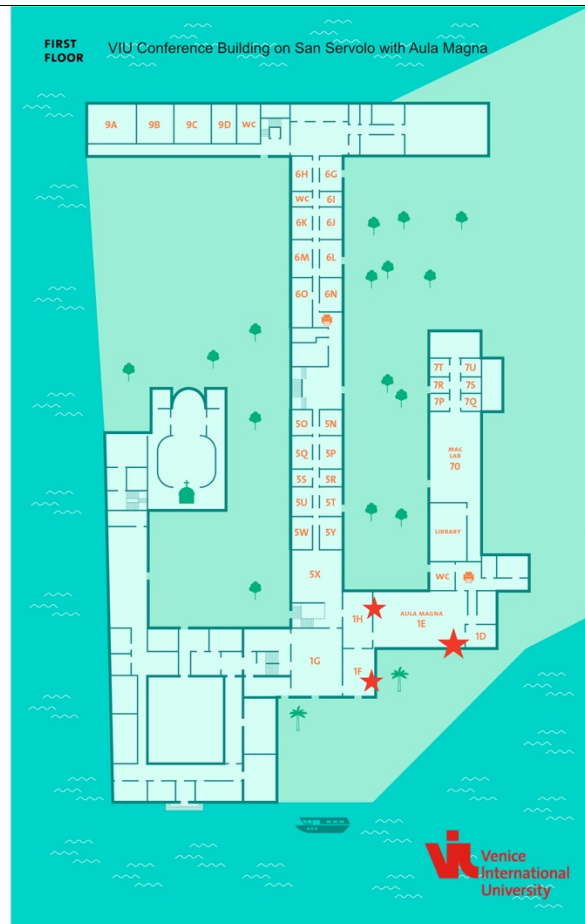
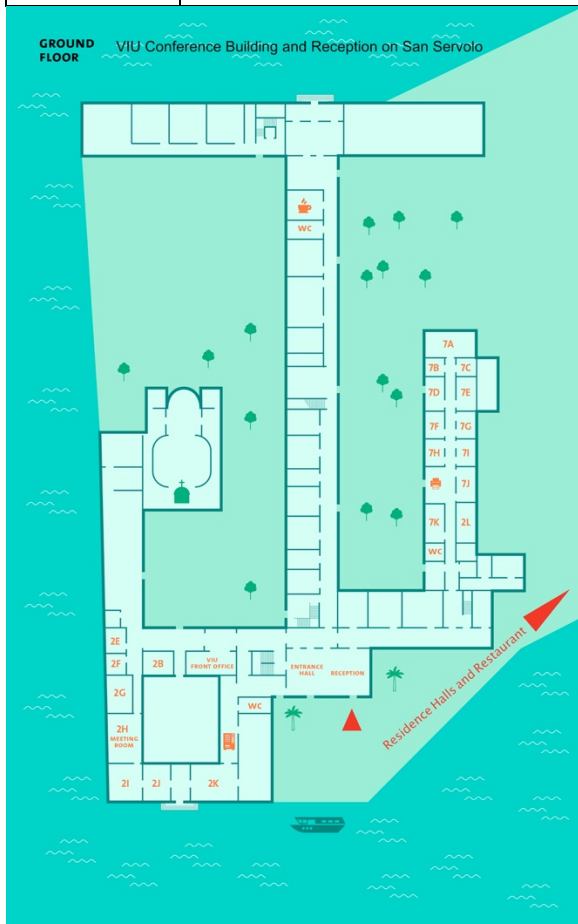
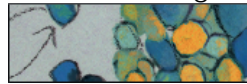


Monday, October 23, 2023

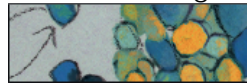
11:00	Meet at Munich Hbf, Track 11 (Check departure board for last-minute changes!) Check in with Elizabeth.
11:32	Depart 11:32 EC 85 München - Venezia S. Lucia, Track 11 Wagon 256 (Seats 21-28, 31-38, 41-48, 51, 53-58, 62-68, 115, 117) Wagon 257 (Seats 51, 53-58, 91-98, 101)
18:35	Arrive Venice: 18:25 Meet guide and collect vaporetto passes Transfer to San Servolo by chartered boat
19:15 -	Room check-in San Servolo
20:30	PhD Dinner San Servolo Restaurant for those who registered



WiFi „VIUGUEST“ and „VIU“
username: lmusfb1054
password: lmusfb1054


Tuesday, October 24, 2023

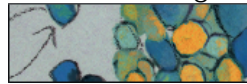
7:00-8:45	<i>Breakfast in San Servolo Restaurant</i>
9:00-9:15	Welcome Thomas Brocker in the <i>Aula Magna</i>
9:20-9:35	A01 Ludger Klein , <i>Thymic B cells and central T cell tolerance</i>
9:40-9:55	A02 Marc Schmidt-Supprian , <i>Differentiation pathways of semiinvariant innate-like T cells</i>
10:00-10:15	A03 Vigo Heissmeyer , <i>MALT1 dependent cleavage of Roquin controls T cell activation, differentiation and autoimmunity</i>
10:20-10:35	A04 Daniel Krappmann , <i>MALT1-TRAF6 interaction balances immune homeostasis and activation</i>
10:40-10:55	A05 Daniel Kotlarz , <i>Deciphering the role of Cyclin-T1 in human immune cell plasticity – Insights from children with inflammatory bowel disease</i>
11:00-11:30	<i>Coffee break</i>
11:30-11:45	A06 Anne Krug , <i>Dendritic cell precursor response to viral infection</i>
11:50-12:05	B01 Jürgen Ruland , <i>Immune Receptor Signals in T cell lymphoma</i>
12:10-12:25	B02 Katja Lammens , <i>The Schlafen Family of Proteins</i>
12:30-12:45	B03 Thomas Brocker , <i>Dendritic cell control of T cell differentiation and immune responses by exosomes</i>
13:00-14:30	<i>Lunch, San Servolo Restaurant</i>
14:30-14:45	B06 Thomas Korn , <i>An unexpected role of B cells in neuromyelitis optica</i>
14:50-15:05	B09 Kilian Schober , <i>Vaccinations as standardized model systems to follow the plasticity of human antigen-specific T cell responses</i>
15:10-15:25	B10 Alisa Puhach (AG Zielinski), <i>T cells with holes</i>
15:30-16:00	B11 Isabelle Serr (AG Daniel), <i>Early onset Treg impairments in islet autoimmunity</i>
16:00	<i>Coffee break</i>
	Group photo, then free afternoon/evening
20:30	SFB 1054 Board meeting


Wednesday, October 25, 2023

7:00-8:45	<i>Breakfast in San Servolo Restaurant</i>
9:00-9:15	B09 Dirk Busch , <i>Polyclonal antigen-specific CD8+ T-Cell responses</i>
9:20-9:35	B14 Dietmar Zehn , <i>Mechanism that mediate maintenance and differentiation of proliferation competent progenitor T cells in chronic infection</i>
9:40-9:55	B15 Veit Buchholz , <i>Stem-like maintenance of NK cell memory</i>
10:00-10:15	B16 Kathrin Schumann , <i>CRISPR-dissection of transcriptional and epigenetic patterns in human CD4 T cell function and differentiation</i>
10:20-10:35	B17 Hannah Fischer (AG Hornung), <i>Severe hyperinflammation in a patient due to a de novo mutation in DPP9</i>
10:45- ...	Poster Session with coffee buffet <i>in Aula Magna and rooms 1F & 1H</i>
13:00-14:30	<i>Lunch, San Servolo Restaurant</i>
... -15:00	Poster Session end
16:00-18:00	Elective special tour of the <i>Ospedale SS Giovanni e Paolo</i> for those who registered
	Free evening

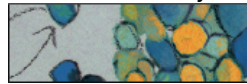


Photo by Prateek Yadav



Thursday, Oct 26, 2023

7:00-8:45	<i>Breakfast in San Servolo Restaurant</i>
until 9:15	Check out of rooms
	<u>SFB 1054 General Assembly</u>
9:20-9:35	IRTG Elizabeth Schroeder-Reiter <i>Reports from the IRTG and the Gender Program</i>
9:40-9:55	Z02 Jan Kranich <i>Cell Decision Platform - Updates and News</i>
10:00-10:15	Poster Prize Award
10:20-10:35	Feedback and closing remarks , Thomas Brocker
10:35-11:45	SFB 1054 General Assembly
	<i>Coffee break and informal farewell discussion</i> Lunch bags for the train ride available for all
12:00-12:10	Collect luggage, meet at dock
12:10-12:45	Transfer to S. Lucia train station by chartered boat
13:35-20:26	Depart S. Lucia train station: 13:35 EC 82 Venezia – München, Wagon 256 (Seats 21-28, 31-38, 41-48, 51, 53-58, 62-68, 71-78, 84-88, 115, 117) Arrive Munich Hbf: 20:26



A01	Joao Freitas & Dario Zebcevic	<i>The role of thymic B cells in central tolerance.....</i>	1
A01	Amina Sayed	<i>The role of Aire in regulating Natural IgM-producing Plasma cells</i>	2
A01	Elisabetta Petrozziello	<i>The role of Cathepsin L in shaping a functional CD4 T cell repertoire</i>	3
A03	Lisa Kiffinger	<i>AKNA is a novel RNA-binding protein that localizes to the centrosome and regulates the germinal center reaction.....</i>	4
A03	Arlinda Negraschus	<i>Roquin cleavage impacts on T cell and CAR T cell functionality</i>	5
A03	Taku Kureha	<i>The role of m6A-binding protein Ythdc1 in shaping T cell clonal expansion and differentiation through metabolic signaling control</i>	6
A03	Temssy Raj	<i>Pancreas neoplasia arises due to Roquin inactivation in T cells is driven by inappropriate G-CSF production by Th17 cells</i>	7
A04	Franziska Ober & Constanze Sixt	<i>Crosstalk between TNFR and TCR signalling?</i>	8
A04	Thomas O'Neil & Carina Graß	<i>Regulation of MALT1 is required for immune homeostasis....</i>	9
A05	Yetta Yeung	<i>Deciphering the role of Cyclin-T1 in human immune cell plasticity – Insights from pediatric inflammatory bowel disease.....</i>	10
A05	David Illig	<i>iPSC-derived model systems to study immune cell function and plasticity</i>	11
A06	Dimitrios Starfas	<i>Dendritic cell differentiation in non steady-states</i>	12
A06	Apurva Dhavale & Linus Rinke	<i>T follicular helper cell differentiation in Yellow Fever Virus infection 13.....</i>	13
B01	Christin Weiß	<i>MALT1 and its role in regulatory T cell reprogramming in the tumor microenvironment.....</i>	14
B02	Michael Kugler	<i>Mechanistic understanding of human SLFN11</i>	15
B03	Lavinia Flaskamp	<i>In vivo labelling of phosphatidylserine positive circulating and cell-bound extracellular vesicles.....</i>	16
B03	Annkathrin Scheck	<i>In vivo labeling of phosphatidylserine positive circulating and cell bound extracellular vesicles.....</i>	17
B03	Wenbo Hu	<i>Targeting antigens to phosphatidylserine triggers rapid T- and B-cell responses</i>	18
B03	Franziska Prummer & Monica Prectl	<i>EV-binding by T cells during chronic infection</i>	30
B06	Ali Afzali	<i>B cells control autoimmunity against AQP4 by negative selection of antigen-specific thymocytes.....</i>	19
B09	Adrian Straub	<i>Recruitment of epitope-specific T cell clones with a low-affinity threshold supports efficacy against mutational escape</i>	20
B10	Shan Sun	<i>Stability and plasticity of tissue resident T cell polarization patterns.....</i>	21
B10	Chang Feng Chu	<i>Characterization of skin T cell Naivety</i>	22
B10	Alisa Puhach	<i>T-cell GSDME – a novel player in antitumor immunity</i>	33
B11	Hannah Hipp	<i>Targeting DHODH signaling fosters Treg-based immune modulation to control autoimmune Type 1 Diabetes.....</i>	23
B11	Sandra Dirschl	<i>Impairments of regulatory T cells during early stage Type 1 Diabetes.....</i>	24
B14	Jacqueline Berner	<i>Progenitors of exhausted CD4 T cells</i>	25
B14	Lara Donhauser	<i>Diversity of human CD8 T cells in acute and chronic infection.....</i>	26
B15	Marine Pujol	<i>Mapping the origins of adaptive-like NK cell responses</i>	27
B16	Susanne Stofner	<i>Pooled CRISPR screens in human T cell subsets to dissect transcriptional regulators of co-inhibitory receptors</i>	28
	Pallavi Kadam	<i>The role of Sprouty 1 and 2 in CD4+ T memory cell differentiation.....</i>	31
	Batuhan Akcabozan	<i>Role and regulation of mTORC1 and ribosome biosynthesis in T cell activation.....</i>	32